

EXO™ Connectivity Hub

# The EXO™ Platform

EXO™ is a modularized platform that supports a wide variety of connectivity types and applications on the same 1RU chassis, allowing for flexibility now and growth in the future.

EXO™ supports up to four cassette and feed-through modules. Modules can be mixed to match your connectivity requirements. There are modules for fiber, copper, wavelength, and optical power management, supporting 1G, 10G, 40G, and 100/120G connectivity. With 48 diverse ports, the EXO™ platform offers flexibility and space savings.

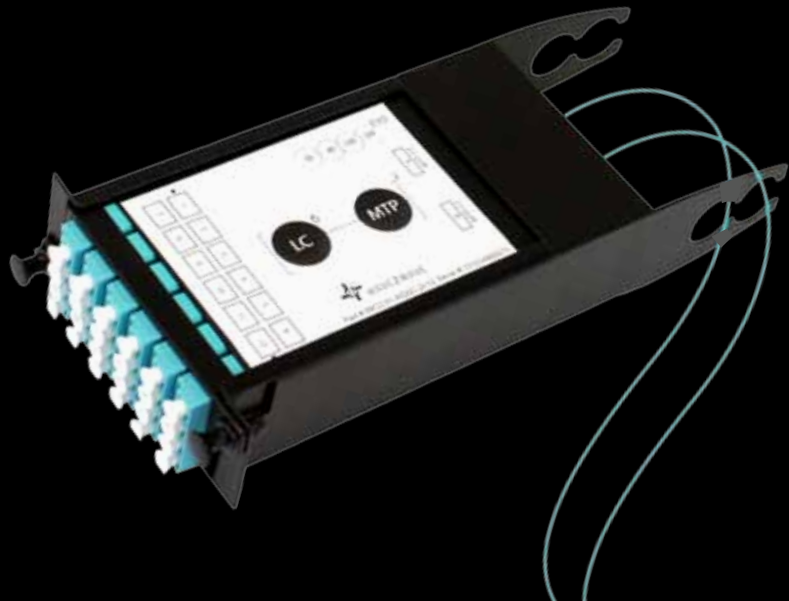
EXO™ modules allows scalability as data center connectivity needs change. With the ability to plug in exactly the modules needed now and in the future, EXO™ is a grow on demand platform.

1 RU Modular  
Fiber, Copper,  
Wavelength & Power  
Management Panel

## Cables That Fly™ - EXO™ Kite



The EXO™ Kite is a 0U panel which supports one EXO™ module. It can be used to extend remote connections and is easy to deploy as it is magnetized and can be connected to any metal location on a rack.



## A Smaller Footprint - EXO™ mini

EXO™ mini introduces the industry's newest form factor – smaller, modular and smarter. Facilitating a wire to wire connection to the maximum network performance, EXO mini offers RJ45, LC and MTP feedthrough connections. Functionality comes with elegance.







# Copper

## CAT6A Module

---

- 12 Port RJ45, CAT6A Feed-Through Module
- Compact, High Density Design, Allows up to 48 Ports per 1RU
- Backward Compatible with CAT5e and CAT6



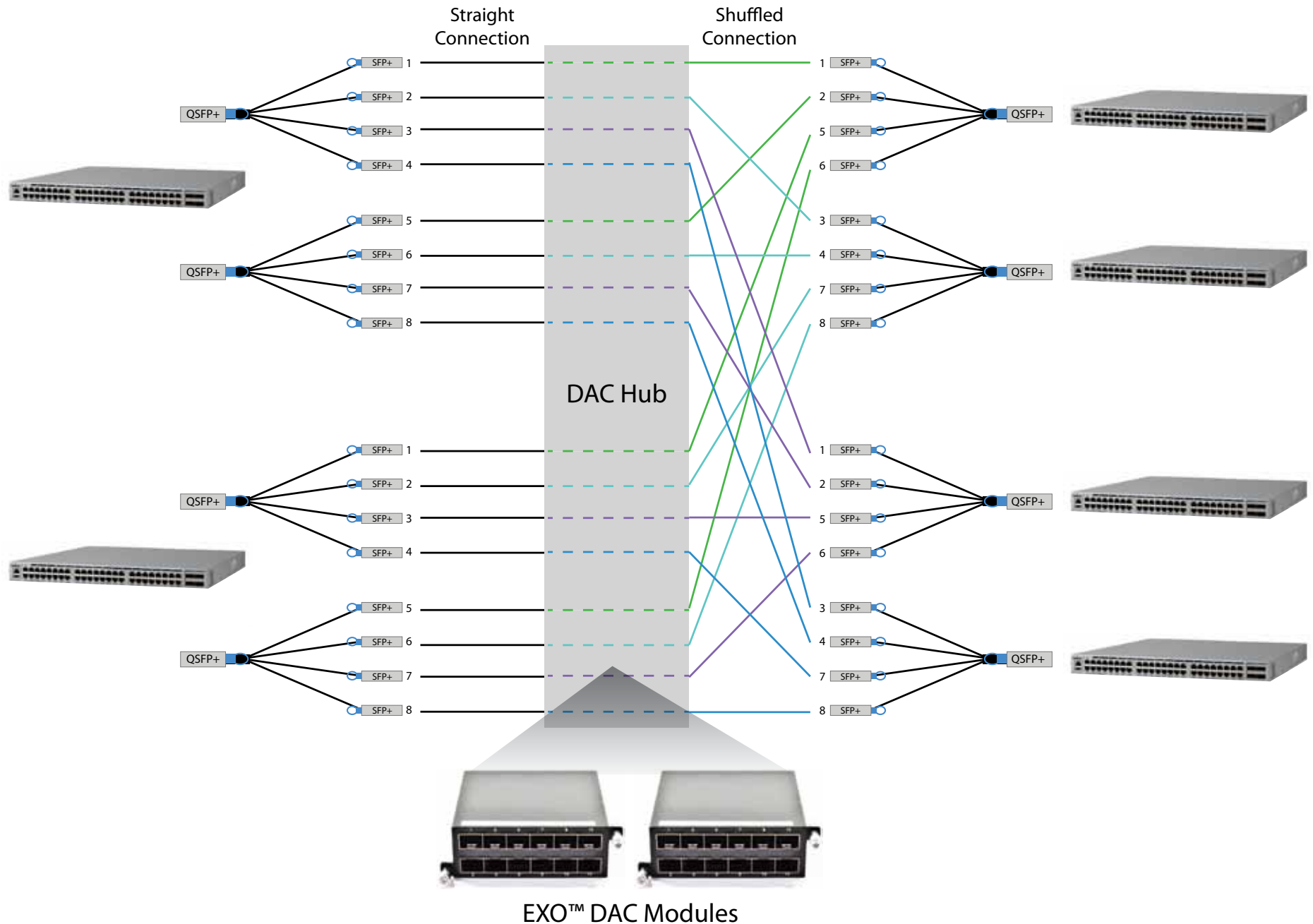
RJ45 Copper Feed-Through

# Configure Spine & Leaf with DAC Hub

Spine Switches

QSFP+ Fractional 10G Configuration

Leaf Switches



# High-Speed Copper

## SFP+ DAC Module

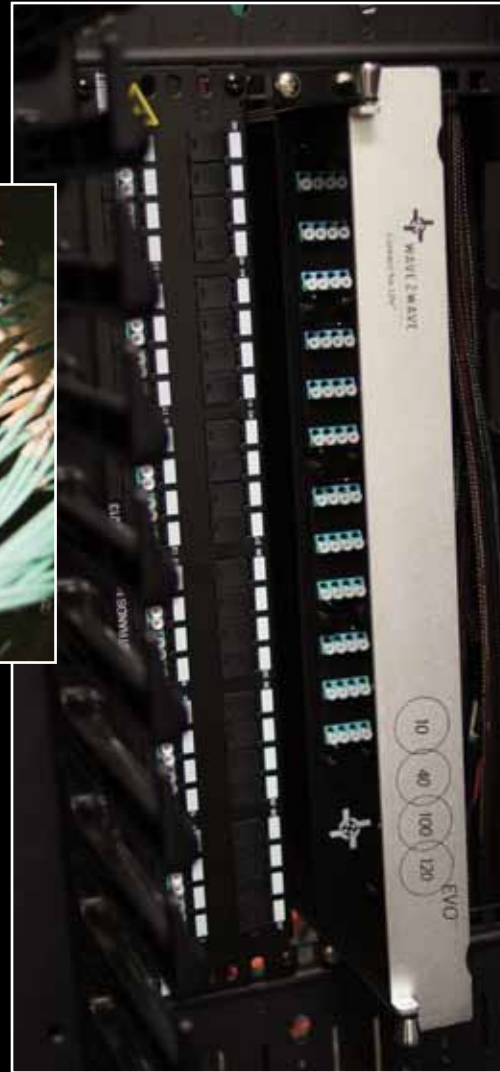
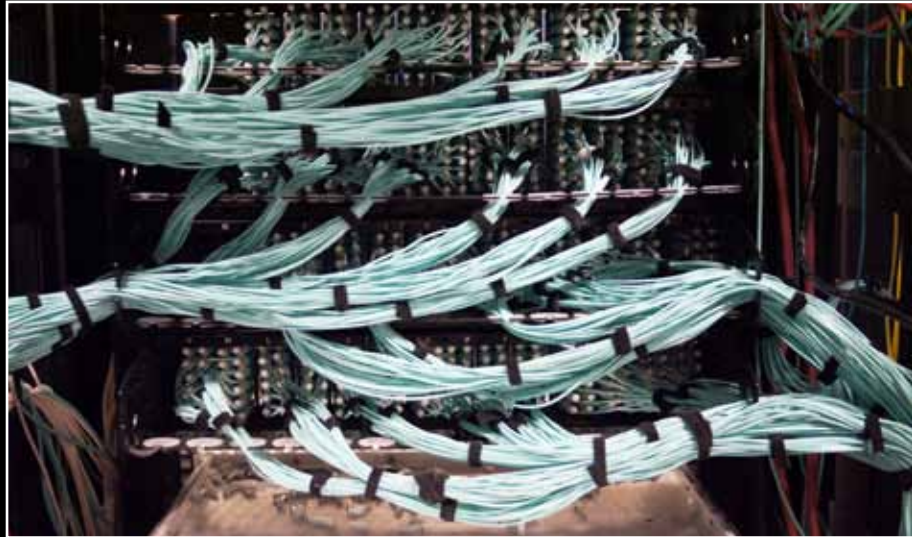
---

- SFP+ DAC Module offers fractional capabilities on 40G in a modular 1RU platform. Lane shuffling is done in a simple feed-through format.
- Instead of optical transceivers, the SFP+ DAC module provides for passive direct attached cable (DAC) connections within 5 meters of a network core.
- SFP+ DAC Module achieves a lower latency compared to OEO solutions.



SFP+ High-Speed Copper Cassette





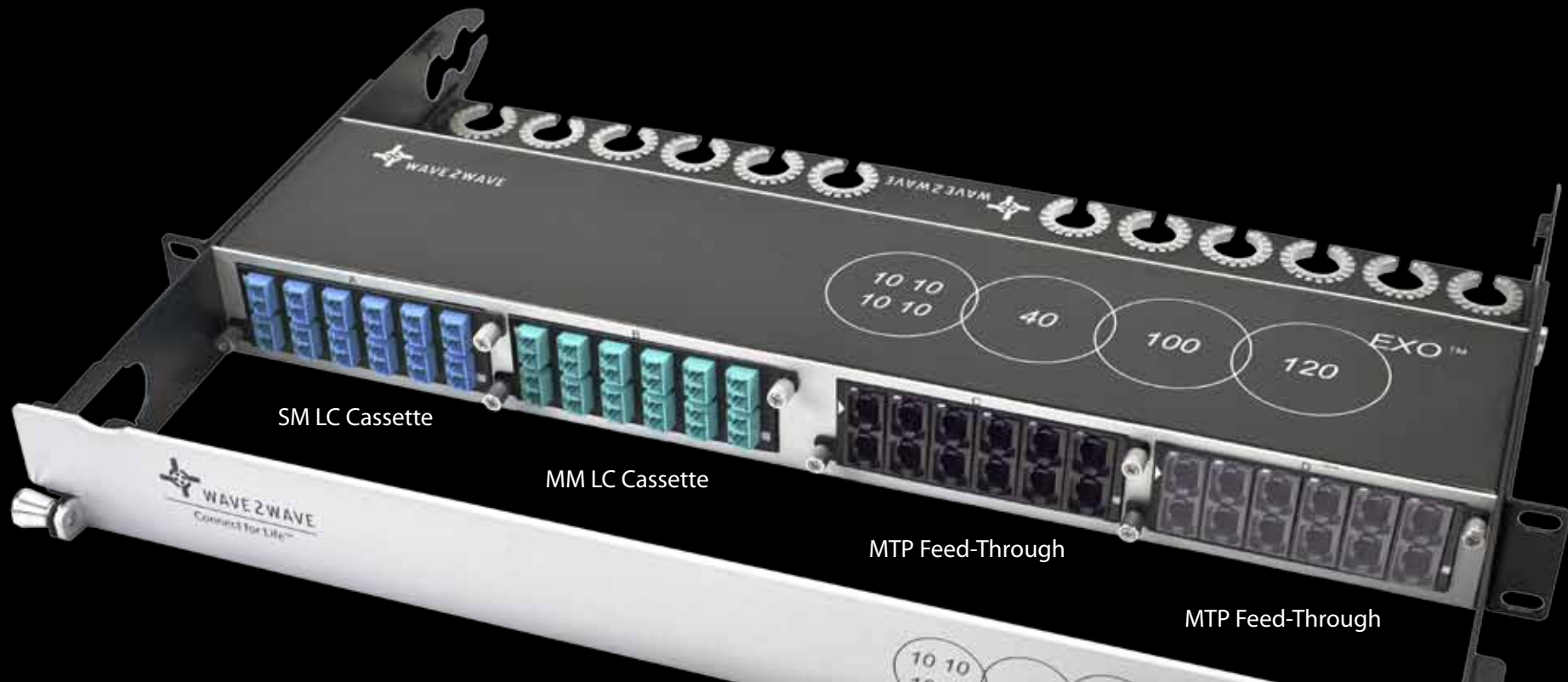


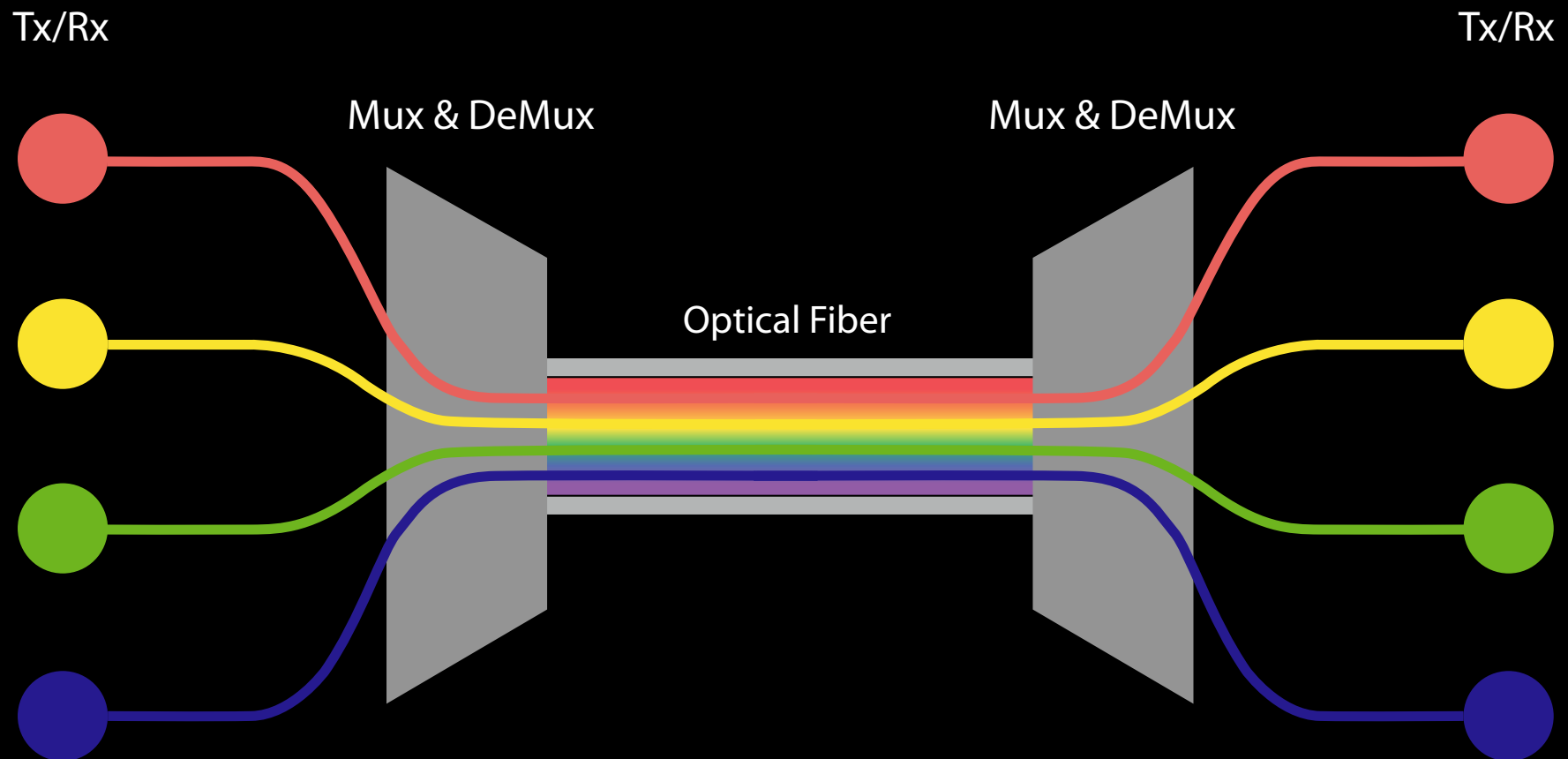
# Fiber

A single versatile platform supports 10G, 40G and 100/120G throughout the evolving data center architecture.

## Below are some example scenarios for an EXO™ deployment:

- ISP incoming service via single-mode fiber, patch into a feed-thru LC-LC module, distribute to other racks, remaining 3 slots used for copper and MTP breakout.
- EXO™ chassis loaded with OM4 and SMF MTP-LC cassettes, each row has multiple chassis and cassettes to distribute the all the fiber within the new data center.
- Each EXO™ has 12 MTP, 24 LC and 12 RJ45 connections. This setup allows the customer to distribute any connection from their hardware to any of their ports.





8 Channel WDM Cassette

# Optical DWDM Mux & DeMux

## EXO™ Lambda's 8,16, 48 Channel Mux/DeMux Modular Solution

---

- Pre-Paired Mux/DeMux Per Channel and Plug-n-Play with Equipment
- DWDM Mux/DeMux with Fiber and Copper Patching Integrated

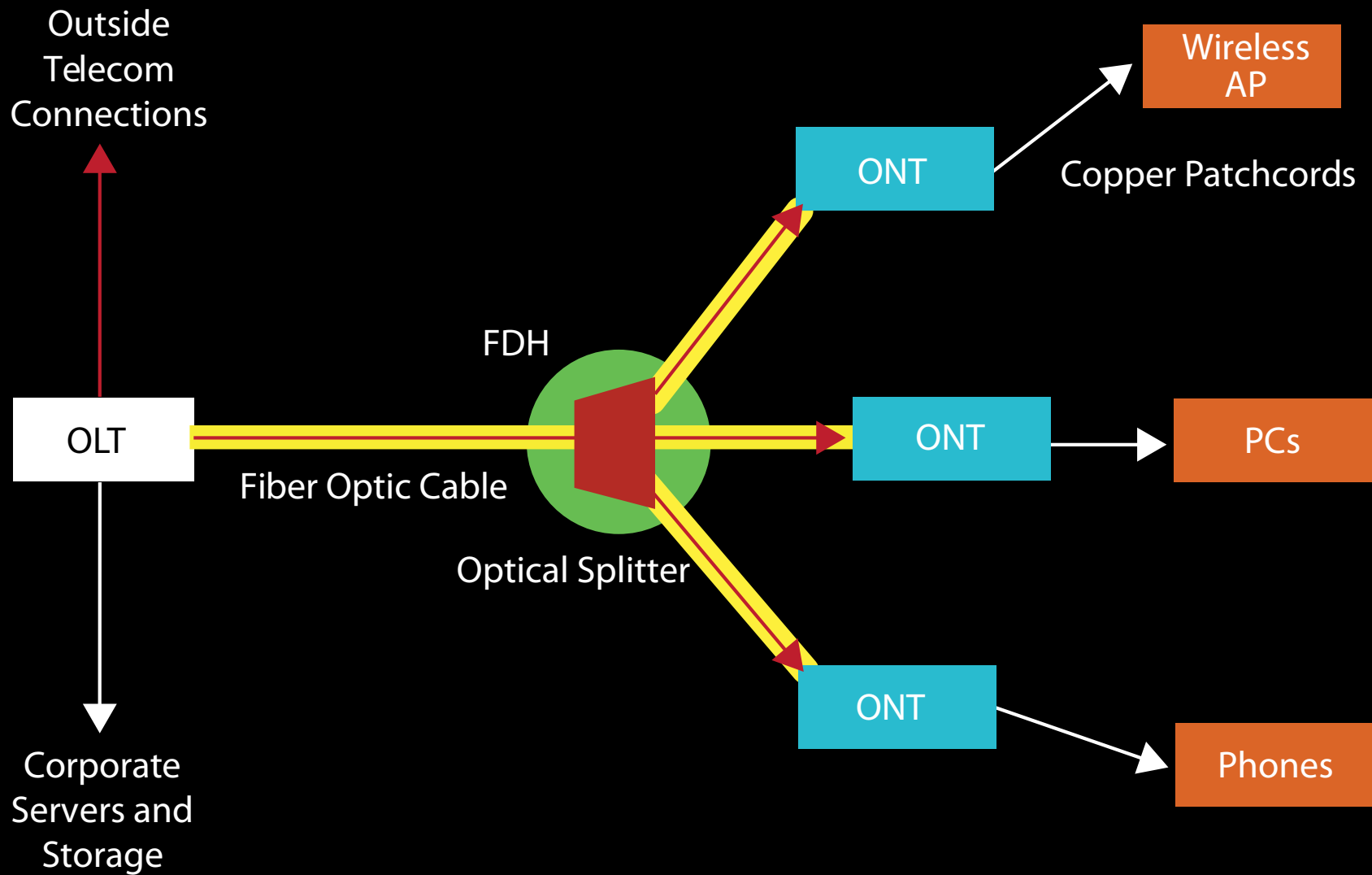


16 Channel WDM Cassette



48 Channel WDM Cassette





# Optical Power Management

The optical power splitter supports both single mode and multi mode applications in a modular EXO™ form factor.



Single-mode LC Splitter Cassette



Single-mode MTP Splitter Cassette



Multi-mode LC Splitter Cassette



Multi-mode MTP Splitter Cassette

# Connectivity Table

Mix and Match Any Connectivity Types in the EXO 1RU Panel



## Copper

Connections	Module Type
SFP+ High-Speed DAC	12 Port Cassette
CAT6A RJ45	12 Port Feed-Through

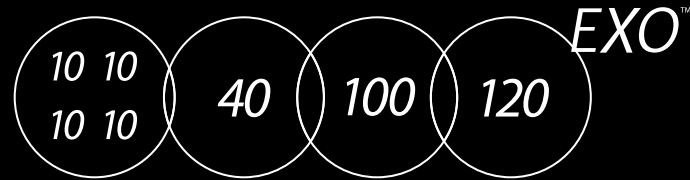
## DWDM Mux/DeMux Wavelength

Connections	Interface	Module Type
100GHz 8 Channel	LC Com, LC $\lambda$	Cassette
100GHz 16 Channel	LC Com, MTP $\lambda$	Cassette
100GHz 48 Channel	LC Com, MTP $\lambda$	Cassette

## Optical Power Management

Connections	Mode Type	Module Type (Adapter Color)
MTP	SMF	Cassette (Black)
MTP	OM4	Cassette (Gray)
LC	SMF	Cassette (Blue)
LC	OM4	Cassette (Aqua)





## Fiber

Connections	Mode Type	Module Type (Adapter Color)	Application
MTP-LC	OM4	12 Port/3x MTP Cassette (Aqua/Gray)	QSFP+, QSFP28 Compatible Backbone
MTP-LC	OM4	12 Port/2x MTP Cassette (Aqua/Gray)	QSFP+, QSFP28 Compatible Backbone
MTP-LC	OM4	12 Port/1x MTP Cassette (Aqua/Black)	CXP 100G Compatible Backbone
MTP-LC	SMF	12 Port/2x MTP Cassette (Blue/Black)	MTP Backbone to LC Patching
LC-LC	MM	12 Port Feed-Through (Aqua)	Low Loss Direct Connect
LC-LC	SMF	12 Port Feed-Through (Blue)	Low Loss Direct Connect
SC-SC	MM	6 Port Feed-Through (Beige)	Low Loss Direct Connect
SC-SC	SMF	6 Port Feed-Through (Blue)	Low Loss Direct Connect
MTP-MTP	MM/SMF	6 Port Feed-Through (Black)	CXP 100G MM Plug & Play; SM
MTP-MTP	MM/SMF	12 Port Feed-Through (Black)	CXP 100G MM Plug & Play; SM
MTP-MTP	MM	6 Port Feed-Through (Gray)	QSFP+ 40G, QSFP28 100G
MTP-MTP	MM/SMF	12 Port Feed-Through (Gray)	QSFP+ 40G, QSFP28 100G



