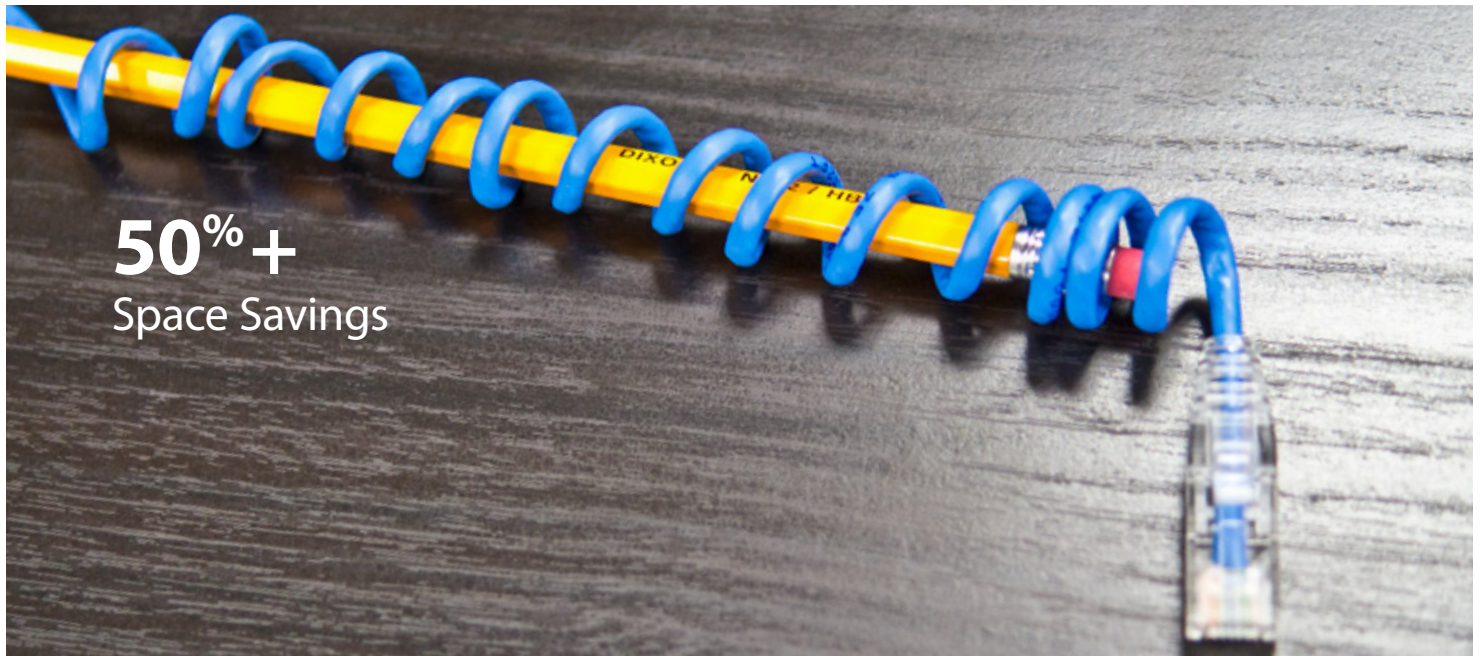


Super Slim CAT6 Copper Patch Cord



Overview

The w-Intense™ Super Slim CAT6 patch cord makes cable management easier by requiring half the physical space compared to a typical patch cord. The w-Intense™ Super Slim CAT6 patch cord is constructed of 28 AWG, unshielded, twisted pair and stranded copper with high performance RJ45 modular plugs on each end.



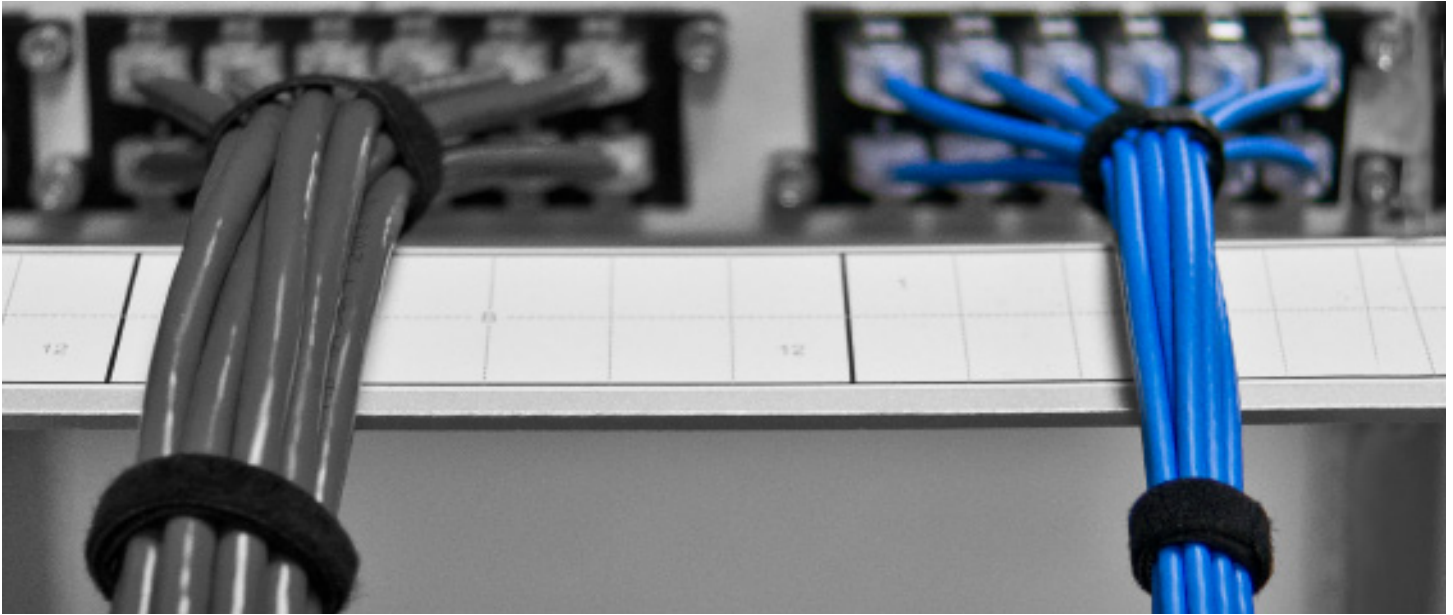
Features & Benefits

- 2x Thinner Diameter, Tight Bend Radius Enables Improved Cable Management
- 100% Continuity Tested, Wire Map
- Labeling at Each End with Length and Serial Number
- Snagless Connectors Provide Easy Release
- Built-in Strain Relief Boot, Provides Easy Access in High-Density Applications
- 4-Pair 28AWG Stranded CAT6 UTP Cable
- Industry Standard Shielded RJ45 Connectors with 50um Gold Flashed
- Special Packaging to Allow the Least Shape or Form Memory
- Customized Bar Code Label Available Upon Request
- Additional Customizations are Available in Bundle Configurations

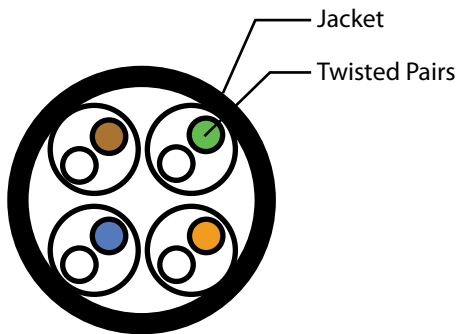
Applications

- Gigabit Ethernet 1000BASE-T
- Fast-Ethernet 100BASE-T
- Ethernet 10BASE-T
- Voice over Internet Protocol (VoIP)
- 155 Mb/s ATM, 622 Mb/s ATM, 1.2 Gb/s ATM
- Token Ring 4/16

Super Slim CAT6 Copper Patch Cord



Cable Cross-Section



Technical Information

Conductor: Bare Copper 28AWG

Jacket: PVC (CMR)

Outer Diameter: 3.6+/- 0.2mm

Operating temperature: -20°C to 60°C

Storage temperature: -20°C to 70°C

Plug housing: UL94V-0 rated clear Polycarbonate

Contacts: Gold plated phosphor bronze

Standards Compliance

- ANSI/TIA-568-C.2
- ANSI/TIA-968-A
- © UL
- RoHS



Product Selection

Part Number: 71-1068-BCDE

BC (Jacket Color)

BK (Black)
BL (Blue)
GN (Green)
YW (Yellow)



DE (Feet/Meter)

Recommended up
to 5 Meters